

GRAYL

LEGEND & QUEST WATER FILTRATION CUP Owners Manual



FILL. PRESS. DRINK.
Works like a French Press!

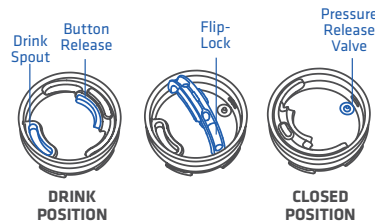
International Manuals:
Manuales / Manuels / Manuali / Handbücher
www.thegrayl.com/manuals

Changing the Way the World Drinks Water.

Thank you for choosing GRAYL. Our patented technology creates safe, great tasting water on the go with no prolonged waiting (gravity filters), pumping, squeezing, or sucking. In seconds, our interchangeable filters produce safe, clean water. Drink Freely™ from the Water Filtration Cup that works like a French Press.

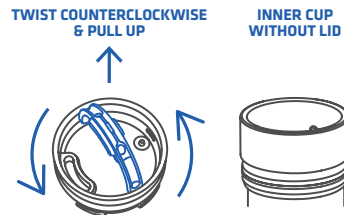


Lid Operation Unlock. Flip. SNAP!



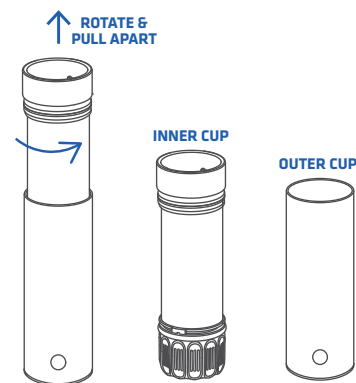
To open, press the gray button (to unlock), flip the bail and SNAP! into the DRINK position (**a SNAP! signifies the pressure release valve is engaged and locked open**). When on-the-go, return the bail into CLOSED position and seal airtight with a SNAP!

Lid Removal.



Remove the entire lid by holding the handle of the Flip-Lock Lid and **twisting counterclockwise 1/4 of a rotation** and pulling upward.

Separate Inner Cup from Outer Cup.

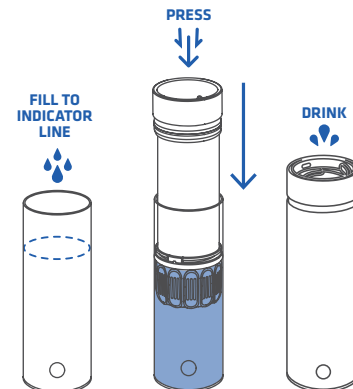


Place one hand on the Outer Cup and another on the Inner Cup, **then rotate while pulling apart.**

PERFORMANCE TIPS:

- Using a twisting motion helps facilitate cup separation.
- When dry, cups may require more force to separate.
- Ensure the filter is properly connected to the Inner Cup/Filtration Press.

Fill. Press. Drink.



Fill Outer Cup with water to the indicated fill line. Remove lid and gently press Inner Cup into Outer Cup. **Apply steady downward pressure** until filter rests at bottom of cup. Drink Freely™ from the Water Filtration Cup that works like a French Press.

TAP Filter 7 second press
TRAIL Filter 15 second press
TRAVEL Filter 30 second press

PERFORMANCE TIPS:

- Before applying steady downward pressure, ensure the lid is removed and avoid "cupping" the palm of your hands over the top of the Inner Cup/Press.
- Don't use excessive pressure, which decreases filtration performance.

