

IMPORTANT INFORMATION

■ ACTIVATED CARBON BLOCK FILTERS

Sintered activated carbon block filters as used in this system differ fundamentally from:

- Table or can filters which do improve the water's flavour (and partially the optics of the water as well) but can only remove pollutants to a small degree.
- Extruded block filters which have to a very high degree agglutinated (and therefore ineffective) activated carbon surfaces based on the molten binders created during the manufacturing process.

The high-quality activated carbon that is based on coconut shells and used in the CARBONIT® block filters has a very high adsorption capacity. Thereby, for example, substances such as chlorine, lead, copper, pharmaceutical residues and hormone-related substances are removed. The minerals stay in the drinking water.

■ USABLE FILTER CARTRIDGES

The DUO-HP, depending on the version, is equipped with filter cartridges by the manufacturer. If needed, information on these and alternative filter cartridges can be gotten from the authorised CARBONIT® resellers or on our website.

■ REPLACEMENT INTERVALS & FILTER PERFORMANCE

The replacement interval of max. 6 months is highly recommended due to hygienic reasons and is stipulated by DIN 1988 / DIN EN 1717. An earlier change within this time period can however become necessary if the water flow has become noticeably less. This is not a defect in the used filter but rather a pointer to the fact that there are now more and more fine particles in the unfiltered water.

Replacement intervals and filter performance of the other usable filter cartridges are listed in the respective documents or on our website www.carbonit.com / My Filter.

■ CARE/MAINTENANCE

The filter housing is pretty much maintenance-free. When changing the filter cartridge it is recommended that one cleans it with a soft cloth and some washing-up liquid; one should also check the mechanical functions as well as the wear parts (seals, tubes etc.).

■ WEAR PARTS

- Filter cartridge: Please make sure to keep to the replacement intervals.
- Seals/tubes: All seals and tubes are wear parts and, if necessary, should be replaced.

■ DISPOSAL OF THE FILTER CARTRIDGES

As the activated carbon of the CARBONIT® filter cartridges is made of coconut shells, the used cartridges can simply be disposed of with the general household waste.

■ OTHER PARTICULARS

If one does not adhere to this manual, then any and every warranty claim is forfeited.

No liability can be assumed for the consequences of using filter cartridges made by other manufacturers.

FURTHER INFORMATION

■ SUPPLIERS

Products of CARBONIT® Filtertechnik GmbH, amongst others replacement filters and accessories, are stocked and sold by a network of authorised resellers.

Further information on the topics of health and filtered drinking water as well as on the range of products as well as the reseller network can be found on our website:

→ www.carbonit.com / My Filter

■ MANUFACTURER

CARBONIT® Filtertechnik GmbH
Industriestraße 2
29410 Salzwedel / OT Dambeck
Germany

Date of issue: 16.04.2018

■ YOUR AUTHORISED RESELLER



AQUA NOBILIS

www.aqua-nobilis.com
info@aqua-nobilis.com
+352 2688 7465

 carbonit®

DUO-HP

Premium Drinking Water Filter



USER MANUAL

FILTER MADE IN GERMANY

PRIOR TO INSTALLATION

Fresh spring water at home - with the DUO-HP manufactured by CARBONIT® not a problem at all. In an instant a healthy thirst quencher flows from one's water taps at home. The technology can be installed easily and quickly.

The filter device CARBONIT® DUO-HP filters the tap water at the point of extraction and is always hidden beneath the sink.

AVAILABLE VERSIONS OF THE DUO-HP

| | |
|-------------------------------------------|-----------------------------------------------------------------------------------------------------------------------------------|
| • Classic parallel flow | Installation into the water line, incl. 2 filter cartridges NFP Premium D, connection kit with quick coupling |
| • Lime serial flow | Branch from the water line, incl. filter cartridges NFP Premium and IK NF2, connection kit with quick coupling |
| • Special serial flow | Branch from the water line, incl. filter cartridges NFP Premium and pre-filter cartridge 1 µm, connection kit with quick coupling |
| • Basic parallel or serial flow | Branch from or installation into the water line, without filter cartridges, connection kit with quick coupling |

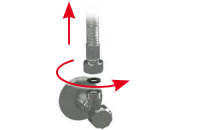
Scope of delivery
(depending on type, portrayed here is the version Classic)



INSTALLATION OF THE FILTER

Check if the delivery is complete! (see scope of delivery)

Attention! Before connecting the DUO-HP to the water system: Switch off the cold water supply at the angle valve and tighten all connections of the pre-assembled components! Put the filter cartridges into the filter cups (if not pre-assembled) and tighten the union nuts with the supplied plastic wrench (a bit more than hand-tight).



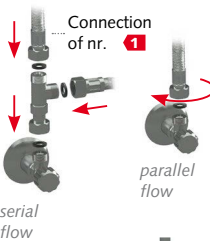
1 Loosen the existing cold water line at the angle valve (**attention:** close angle valve!)

The connection material is made to fit 3/8" threads.



2 Let the filter housing inlet hose snap into the coupling by means of a quick coupling plug on the "IN" side of the filter housing, screw the other hose end tightly to angle valve of the cold water supply (see **3**)

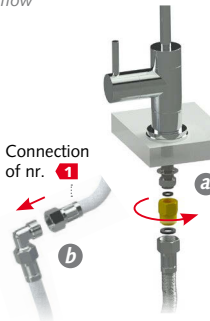
Attach the second hose that is provided to the filter housing outlet "OUT" by means of the quick coupling, connect the other end (elbow) to existing or separate fittings (see **4**).



3 For **serial flow**, mount the T-piece to the angle valve and also connect the loosened connection of **1** as well as the inlet hose to the T-piece.

For **parallel flow**, attach the inlet hose directly to the angle valve.

The use of the elbow is optional (unfavourable layout of the line, compression fitting).



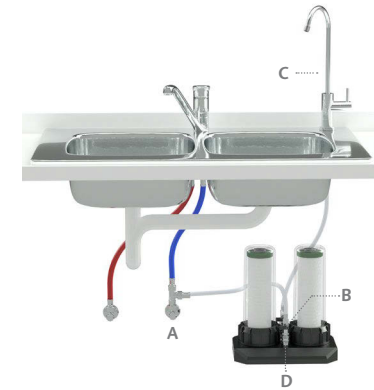
4 Install the water outlet to the tap.

a **separate tap**

Mount the outlet hose without elbow to the tap.

b **existing tap**

Mount the outlet hose to the connection from **1** using the elbow.



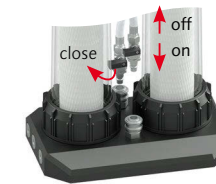
5 **Rinse the filter:**

1. Open the angle valve A
2. Open the ball valve B
3. Open the tap C until bubble free water emerges
4. **Leak test! After completion of the assembly and after approx. 30 minutes check the connections and the filter unit for leaks.**
5. To rinse, let water flow through the filter for about five minutes. Some carbon dust may be rinsed out.

Your drinking water is now ready for use!

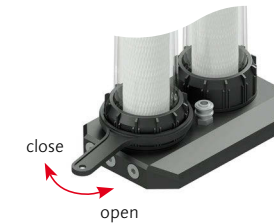
FILTER CARTRIDGE EXCHANGE

To keep the filtered water clean and fresh, the filter cartridges must be replaced after six months.



6 Close the ball valve B and open tap C so that the pressure in the filter unit is released.

Then disconnect the hoses by retracting the unlocking sleeves D of the coupling and put the filter unit in the sink.



7 To replace the filter cartridges, place the installation wrench onto the union and loosen the screwed. Unscrew the union nuts and remove the filter cups.



8 Remove used filter cartridges and insert the new filter cartridges and reassemble everything in reverse order. **Important:** The gasketed and internally perforated side of the filter cartridges (connection cover) must face upwards when inserted into the filter cup.

For information on the initial operation of the filter, see **5.2**. Make sure to carry out a new leak test!

The DUO-HP can be used again!



Before connecting the DUO-HP to the water supply system: turn off the cold water supply (angle valve) and tighten and secure all connections of the pre-assembled components!

After the installation, starting operations and changing filters one should without fail undertake a leakage check and repeat this at least once after 30 minutes. Only operate with cold water!