

## IMPORTANT INFORMATION

### ■ ACTIVATED CARBON BLOCK FILTERS

Sintered activated carbon block filters as used in this system differ fundamentally from:

- table or can filters which do improve the water's flavour (and partially the optics of the water as well) but can only remove pollutants to a small degree.
- extruded block filters which have to a very high degree agglutinated (and therefore ineffective) activated carbon surfaces based on the molten binders created during the manufacturing process.

The high-quality activated carbon that is based on coconut shells and used in the CARBONIT® block filters has a very high adsorption capacity. Thereby, for example, substances such as chlorine, lead, copper, pharmaceutical residues and hormone-related substances are removed. The minerals stay in the drinking water.

### ■ USABLE FILTER CARTRIDGES

The CITO-QC, depending on the version, is fitted by the manufacturer with a CARBONIT® NFP Premium (Classic) or IFP Puro (Universal) filter cartridge. If needed, information on these and alternative filter cartridges can be gotten from the authorised CARBONIT® dealers or on our website.

### ■ REPLACEMENT INTERVALS & FILTER PERFORMANCE

- NFP Premium: max. 6 months / up to 10,000 l
- IFP Puro: max. 6 months / up to 5,000 l

The replacement interval of max. 6 months is highly recommended due to hygienic reasons and is stipulated by DIN 1988 / DIN EN 1717. An earlier change within this time period can however become necessary if the water flow has become noticeably less. This is not a defect in the used filter but rather a pointer to the fact that there are now more and more fine particles in the unfiltered water.

Replacement intervals and filter performance of the other usable filter cartridges are listed in the respective documents or on our website [www.carbonit.com](http://www.carbonit.com) / My Filter.

### ■ CARE/MAINTENANCE

The filter housing is pretty much maintenance-free. When changing the filter cartridge it is recommended that one cleans it with a soft cloth and some washing-up liquid; one should also check the mechanical functions as well as the wear parts (seals, tubes etc.).

### ■ WEAR PARTS

- Filter cartridge: Please make sure to keep to the replacement intervals.
- Seals/tubes: All seals and tubes are wear parts and, if necessary, should be replaced.

### ■ DISPOSAL OF THE FILTER CARTRIDGES

As the activated carbon of the CARBONIT® filter cartridges are made of coconut shells, the used cartridges can simply be disposed of with the general household waste.

### ■ OTHER PARTICULARS

If one does not adhere to this manual, then any and every warranty claim is forfeited.

No liability can be assumed for the consequences of using filter cartridges made by other manufacturers.

## FURTHER INFORMATION

### ■ SUPPLIERS

Products of CARBONIT® Filtertechnik GmbH, amongst others replacement filters and accessories, are stocked and sold by a network of authorised dealers.

Further information on the topics of health and filtered drinking water as well as on the range of products as well as the dealer network can be found on our website:

→ [www.carbonit.com](http://www.carbonit.com) / My Filter

### ■ MANUFACTURER

CARBONIT® Filtertechnik GmbH  
Industriestrasse 2  
29410 Salzwedel / OT Dambeck  
Germany

Date of issue: 06.06.2016

### ■ YOUR AUTHORISED RESELLER



# AQUA NOBILIS

[www.aqua-nobilis.com](http://www.aqua-nobilis.com)  
[info@aqua-nobilis.com](mailto:info@aqua-nobilis.com)  
+352 2688 7465

 carbonit®

# CITO-QC

## Premium Drinking Water Filter



FILTER MADE IN GERMANY

545075-e-160606

## PRIOR TO INSTALLATION

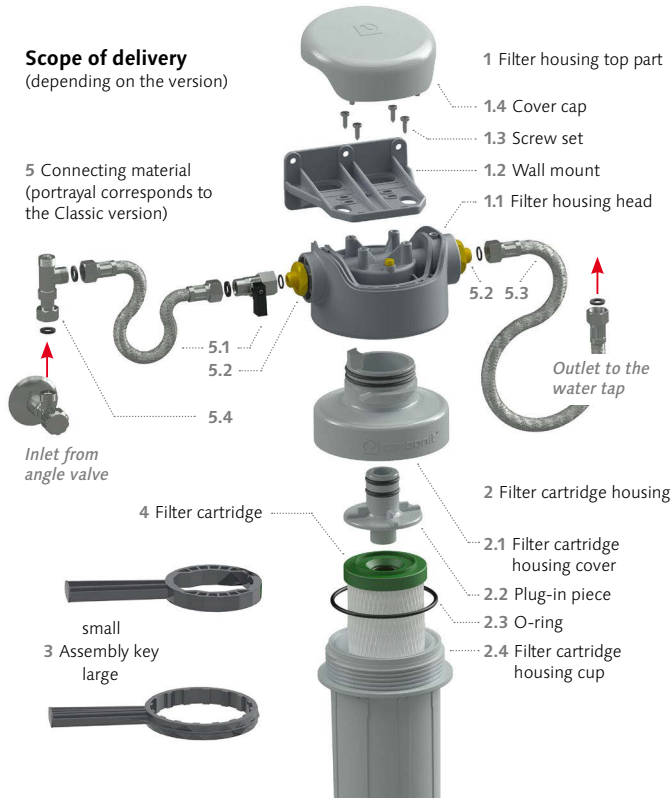
Fresh spring water at home – with the CITO-QC manufactured by CARBONIT® not a problem at all. In an instant a healthy thirst quencher flows from one's water taps at home. The technology can be installed easily and quickly. The QuickConnect (QC) lock ensures an easy handling.

### AVAILABLE VERSIONS OF THE CITO-QC

• <b>Classic</b>	Branch-off from the line, incl. filter cartridge <b>NFP Premium</b> , incl. connecting material
• <b>Universal</b>	Connecting into the line, incl. filter cartridge <b>IFP Puro</b> , incl. connecting material
• <b>Basic</b>	Without a filter cartridge, incl. connecting material for fitting into the and branching off from the line are included
• <b>Basic Module</b>	Complete filter housing without any connections, without filter cartridge as well

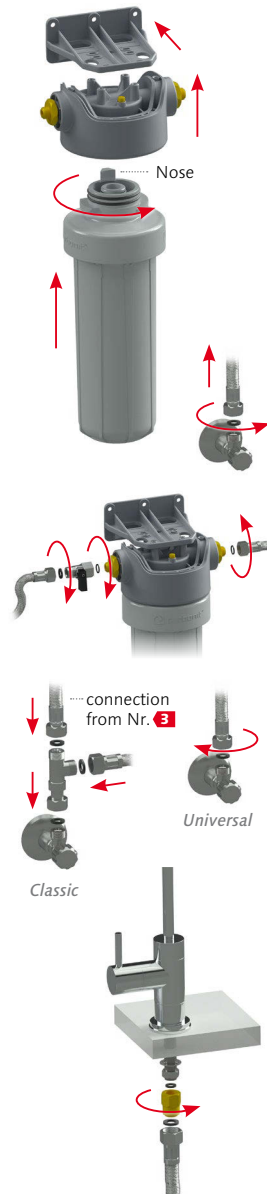
### Scope of delivery

(depending on the version)



## INSTALLATION OF THE FILTER

Check if the delivery is complete! (see scope of delivery)



**1** The wall mount 1.2 has to be fixed to the wall with suitable material (dowels, screws) and then fixate the filter housing head 1.1 with the included screw set 1.3 at the wall mount.

**2** Take the protective foil off the filter cartridge housing 2 and now stick it into the filter head 1.1 (careful: the nose has to point to the rear!) and with a quarter turn to the right let it click into place. Thereby press lightly upwards.

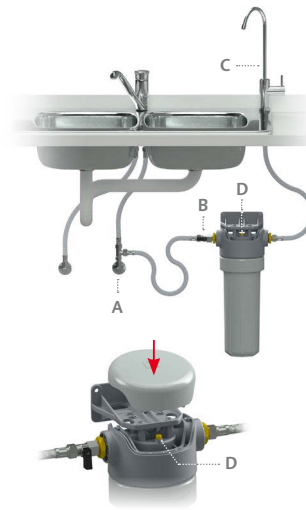
**3** Loosen the existing cold water line from the angle valve (**careful**: turn off the angle valve beforehand!). The connecting material is made to fit 3/8" threads.

**4** Screw the connecting tube with ball valve 5.1 onto the pre-assembled double nipple 5.2 on the inlet side. The second tube 5.3 has to be fastened on the outlet side at the double nipple 5.2.

**5** Depending on the version:  
For the **CITO-QC Classic** assemble the T-piece 5.4 onto the angle valve as well as connecting the water inlet side tube 5.1 and the loosened connection of No. **3** with the T-piece 5.4.

For the **CITO-QC Universal** fasten the water inlet tube 5.1 directly at the angle valve.

**6** Mount water outlet tube 5.3 onto the water tap provided.

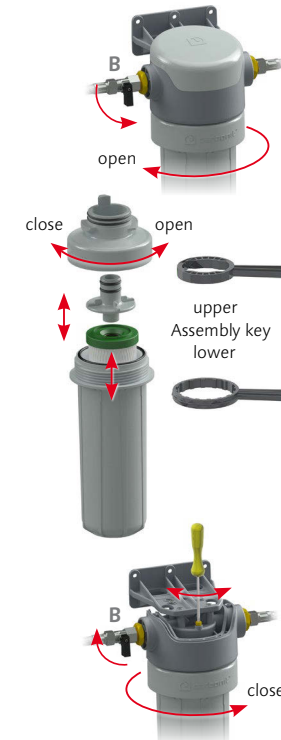


### 7 Venting and rinsing the filter:

1. Turn on angle valve A.
2. Open ball valve B.
3. Open water tap C until bubble-free water comes out, thereafter close water tap C and ball valve B again.
4. In order to vent, open the vent screw D at the filter head with a screwdriver until water comes out, then turn it off again and open up ball valve B again.
5. In order to rinse let water flow through the filter for approx. five minutes; thereby some carbon dust may be rinsed out.
8. Cover cap 1.4 has to be inserted onto the filter housing head.

**Leakage check!** After you have assembled everything and after approx. 30 minutes check all of the connections and the filter device for leakages. Your drinking water filter can now be used!

## FILTER CARTRIDGE EXCHANGE



**9** Close ball valve B and open water tap C, loosen the filter cartridge housing 2 from the filter housing head through a quarter turn to the left with the aid of the large assembly key and take off by pulling downwards.

**10** Now the filter cartridge housing can be taken apart in the sink. Stick the small assembly key onto the filter cartridge housing cover 2.1 and the large onto the filter cartridge housing cup 2.4 and loosen the screw connection. Please take note of the writing "open/close" on the little key. Take the used filter cartridge 4 and the plug-in piece 2.2 out of the filter cartridge housing cup 2.4 and pull off plug-in piece 2.2 from filter cartridge 4. Place the plug-in piece 2.2 into the new filter cartridge and finally assemble everything again, just in reverse steps.

**11** Insert the complete filter cartridge housing 2 as illustrated under no. **2** and carry on as described in no. **7 2.** to **8**; make sure to take off cover cap 1.4 here. The CITO-QC can now be used again!



**Before** connecting the CITO-QC to the water supply system: turn off the cold-water supply (angle valve) and tighten and secure all connections of the pre-assembled components!

**After** the installation, starting operations and changing filters one should without fail undertake a leakage check and repeat this at least once after 30 minutes. **Only operate with cold water!**